

THE IRRESISTIBLE FLAMES OF MASPORT



# GAS LOG FIRE FLUE MANUAL 2004

552339

ISSUE A, JANUARY 2004



**NEW ZEALAND**

1-37 Mt Wellington Highway, Panmure, Auckland 6  
Ph. (09) 571 1200 fax 0508 570 570  
email [sales@masport.co.nz](mailto:sales@masport.co.nz)  
[www.masport.co.nz](http://www.masport.co.nz)

**Masport®**  
gas & wood fires

# DV Zero Clearance Top Exit Vertical Flue Kit

## Product Description

## Part Number

DV Zero Clearance  
Top Exit Vertical Flue Kit

588654



Grenada (P36)



Calais (P36)

***This kit contains:*** Gas Cowl DV, Slip Liner, Outer Liner 1200mm x 3, Inner Flue Crimped 1200mm x 2, Inner Flue Starter 1200mm x 1, Centralising Spider, Liner Supports x 2, Mil-Pac Sealant x 1

**Will fit Masport Grenada & Calais Direct Vent Gas Fires**

# Zero Clearance Top Exit Vertical Flue Kit Installation Instructions

This flue kit has been manufactured in accordance with NZS 5262:2003. To ensure safety this flue kit must be installed as outlined in these instructions. Heater and flue clearances from combustible walls must be in accordance with Masport's specifications and NZS 5262:2003.



1. Locate heater in its proposed position and mark the points for penetration that are directly above the centre of the heater's flue outlet. Check that the heater's location allows the OUTER HEAT SHIELD to clear all structural timbers.
2. Cut a 250mm square hole where penetration is required to accommodate OUTER HEAT SHIELD **NB. A minimum 40mm clearance is required between OUTER HEAT SHIELD and combustible surfaces.**
3. Fit timber nogs around ceiling and roof holes where necessary.
4. Measure overall length of OUTER HEAT SHIELD and FLUE TRIM required. Fix OUTER HEAT SHIELD length(s) to painted FLUE TRIM length, ensuring swaged and crimped end is uppermost, with 3 rivets or self-tapping screws. Insert assembled lengths up through ceiling penetration hole. Fix additional painted FLUE TRIM lengths and continue to raise through roof cavity. Check height the OUTER HEAT SHIELD penetrates roof structure. When calculating roof penetration height, allow for an extra 300mm that can be achieved by using the OUTER HEAT SHIELD SLIP EXTENSION.

The flue is required to be at least 500mm above the nearest point on any part of the roof. It is recommended that in some instances extending the flue above the ridgeline will be necessary. Refer to NZS 5262:2003 for more information. Additional HEAT SHIELDS may have to be added to ensure the correct roof penetration heights are obtained.

5. Assemble the 100mm stainless steel FLUE PIPES together ensuring all seams are in line using 3 pop rivets or screws and seal joints with Mil-Pac sealant (supplied with kit).
6. Fit FLUE SPACER BRACKETS to FLUE if necessary to maintain air gap between FLUE PIPES and OUTER HEAT SHIELD.
7. Lower stainless steel FLUE PIPES from the roof into the OUTER HEAT SHIELD (crimped ends towards heater) and into the heater flue outlet. Lift OUTER HEAT SHIELD for access and seal flue to heater stub.
8. Secure OUTER HEAT SHIELD to heater, if necessary.
9. Using ANGLE BRACKETS secure OUTER HEAT SHIELD to nogs around penetration holes. **NB. A minimum 40mm clearance is required between OUTER HEAT SHIELD and combustible surfaces.**
10. Fix an appropriate flashing around the OUTER HEAT SHIELD to seal onto the roofing or chimney material.
11. Before securing the SLIP EXTENSION OUTER HEAT SHIELD to the OUTER HEAT SHIELD ensure the flue extends above the top of the SLIP EXTENSION OUTER HEAT SHIELD 25mm. Adjust SLIP EXTENSION to obtain this measurement.
12. Fix TOP FLUE SPACER BRACKET to the FLUE making sure lugs fit snugly inside OUTERHEATSHIELD.
13. Fit GAS COWL into flue pushing down fully onto TOP SPACER BRACKET.

**Flue Kit Part Number: 588654**

**N.B. It is the responsibility of the installer to ensure that the installation of this flue kit complies with Masport's specifications for flues and that relevant Local Body requirements are adhered to.**

**Will fit Masport Grenada & Calais Direct Vent Gas Fires**

# Direct Vent Inbuilt Horizontal Flue Kit

Product Description

Part Number

DV Horizontal Flue Kit

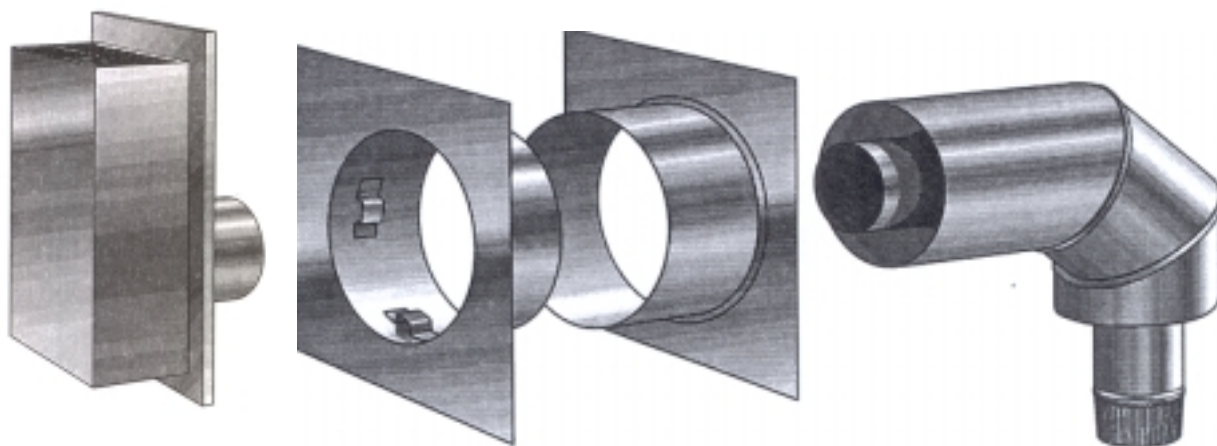
588667



Grenada (P36)



Calais (P36)



***This kit contains:*** Highwind Cowl, Wall Penetration Unit, Outer Liner 300mm, Inner Flue 300mm, 85°, Outer Bend, 85° degree Inner Flue Bend, Mil-Pac Sealant

## **WARNING:**

When installing in a high wind situation, common sense must prevail. Choose a sheltered side of the house.

A non-combustible water ingress shelf will need to be fitted 200mm above the terminal to prevent water ingress in extreme conditions or where no soffit shelters the terminal.

**Will fit Masport Grenada & Calais Direct Vent Gas Fires**

# Zero Clearance Top Exit Horizontal Flue Kit Installation Instructions

This flue kit has been manufactured in accordance with NZS 5262:2003. To ensure safety this flue kit must be installed as outlined in these instructions. Heater and flue clearances from combustible walls must be in accordance with Masport's specifications and NZS 5262:2003.

1. Locate heater in its proposed position and mark a point on the rear wall that is directly behind the centre of the heater's flue outlet and at the required height for wall penetration. To ensure Flue rises sufficiently (10mm per 600mm).
2. Check that the heater location allows the THRU-WALL PENETRATION UNIT to clear all structural wall timbers. To avoid site-trimming, position OUTER HEAT SHIELD BEND on heater stub to calculate height for penetration.
3. Cut a 250mm square hole through wall structure about centre of marked point. Nog if necessary for structural support. **NB: A minimum 40mm clearance is required between OUTER HEAT SHIELD and combustible surfaces.**
4. Measure overall depth of wall. If necessary site trim THRU-WALL PENETRATION UNIT to required length.
5. Fix THRU-WALL PENETRATION UNIT through wall structure, securing the square flange to outer surface of external wall with fasteners. Fix to inner wall similarly.
6. Measure distance from centre of heater stub to outside surface of wall. Make allowance for overlaps required on WALL PENETRATION COWL stubs, and both OUTER HEAT SHIELD BEND and stainless steel FLUE BEND.
7. Fix 100mm stainless steel FLUE length and FLUE BEND to required length using pop rivets or self-tapping screws. Seal joints with an appropriate flue sealant.
8. Fix OUTER HEAT SHIELD and HEAT SHIELD BEND to required length using pop rivets or screws.
9. Seal FLUE to heater stub using Mil-Pac sealant (supplied with kit). Fix FLUE and HEATSHIELD BENDS to heater stub inserting through wall penetration.
10. Apply FLUE sealant (supplied) to flue stub of WALL PENETRATION COWL, and insert COWL through wall ensuring flue stub of COWL fits inside FLUE.
11. Fix WALL PENETRATION COWL to outside wall surface. COWL may be painted with high temperature paint.
12. Silicone all external joints to weatherproof.
13. Fit COWL SAFETY CAGE over cowl if necessary.

**N.B. It is the responsibility of the installer to ensure that the installation of this flue kit complies with Masport's specifications for flues and that relevant Local Body requirements are adhered to.**

**Will fit Grenada & Calais Direct Vent Gas Fires**

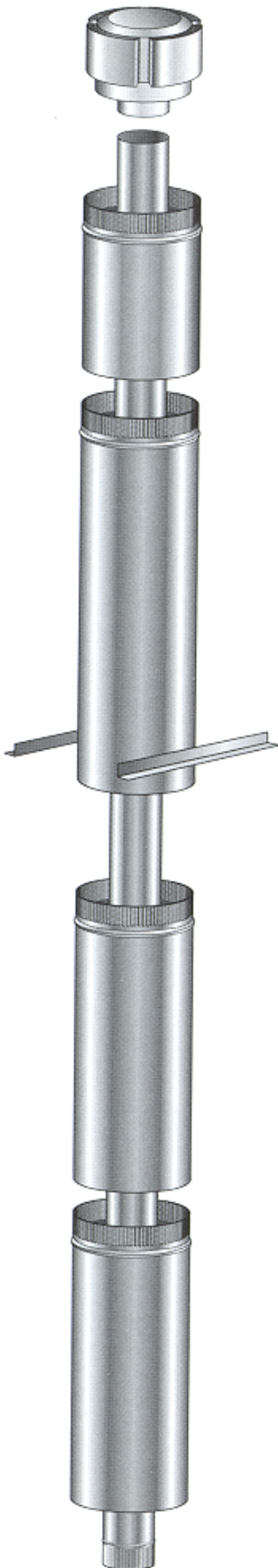
# DV Roma Direct Vent Vertical Flue Kit

Product Description

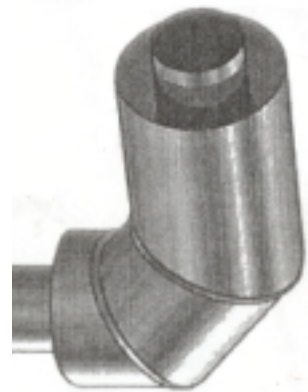
Part Number

DV Vertical Flue Kit

588654



Roma (P33)



DV 85° Bend Kit

Part No: 556313

***This kit contains:*** Gas Cowl DV, Slip Liner, Outer Liner 1200mm x 3, Inner Flue Crimped 1200mm x 2, Inner Flue Starter 1200m x 1, Liner Supports x 2, Mil-Pac Sealant x 1.

## NOTE:

**Both parts must be ordered to make a complete flue kit**

**Will fit Masport Roma Direct Vent Gas Fires**

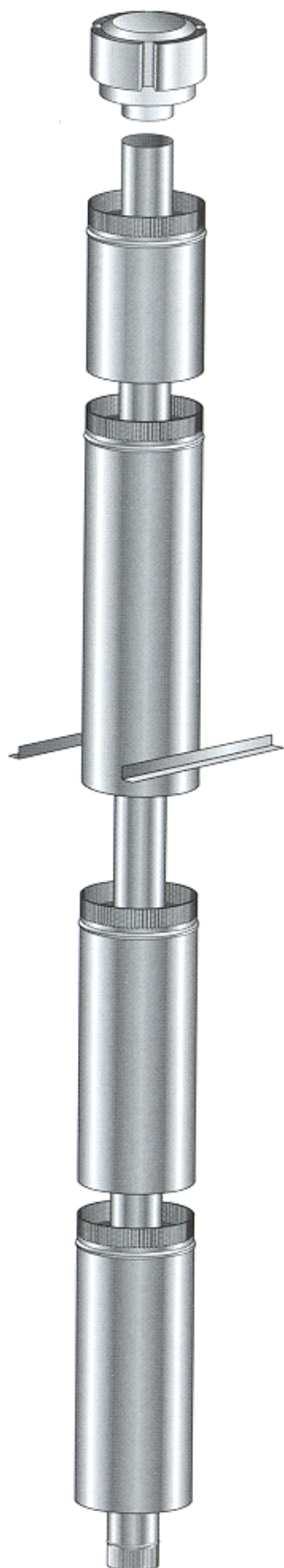
# Direct Vent Inbuilt Vertical Flue Kit

Product Description

Part Number

DV Vertical Flue Kit

588654



Newport (P121)



**DV Off Set Kit - Room  
(Painted)**

Part No: 588658

***This kit contains:*** Gas Cowl DV, Slip Liner, Outer Liner 1200mm x 3, Inner Flue Crimped 1200mm x 2, Inner Flue Starter 1200m x 1, Liner Supports x 2, Mil-Pac Sealant x 1.

## **NOTE:**

**Both parts must be ordered to make a complete flue kit**

**Will fit Masport Newport Direct Vent Gas Fires**

# DV Inbuilt Horizontal Flex Kit

Product Description

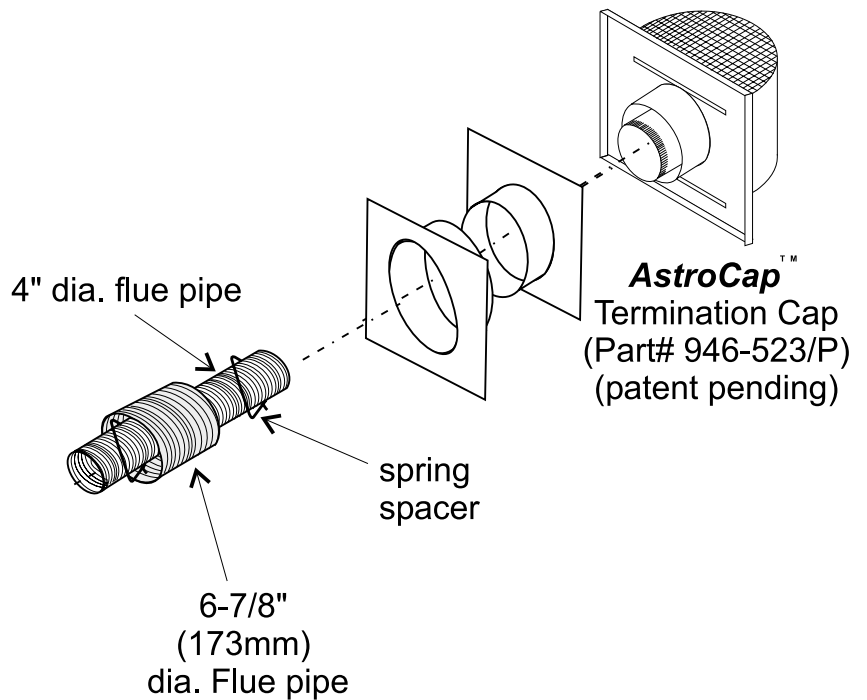
Part Number

DV Flexi Flue Kit  
- 600mm

946-513



Roma (P33)



Newport (P121)



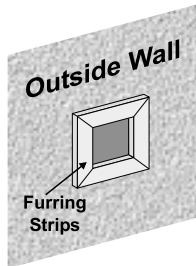
Newport Pier (P131)

***This kit contains:*** Astrocap (patent pending), Wall Thimble, 102mm dia. flue pipe, 175mm dia. flue pipe, Mil-Pac Sealant

**Will fit Masport Roma, Newport & Newport Pier Direct Vent Gas Fires**

# Masport Flexi Flue Kit Installation Instructions

- 1) Locate the unit in the framing, rough in the gas (preferably on the right side of the unit) and the electrical (Junction block is on the left side) on the left. Locate the centerline of the termination and mark wall accordingly. Cut a 254mm hole in the wall (inside dimension).

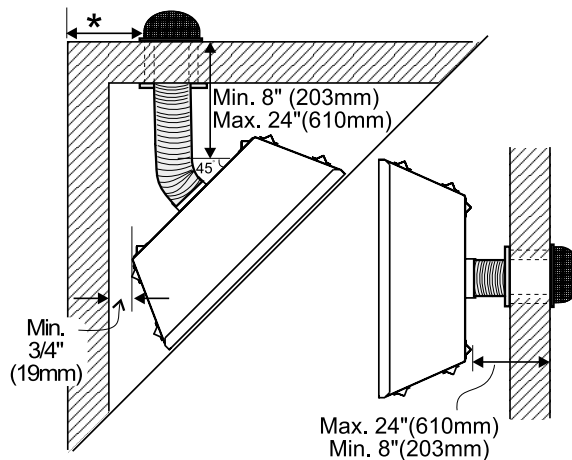


**Note:** To make the installation more aesthetically pleasing, we recommend framing out a square to mount the terminal to.

**Note:** A 40mm clearance around the liner must be maintained except that only a 25mm clearance is needed at the termination end. We recommend framing a 254mm x 254mm (inside dimensions) hole to give structural rigidity for mounting the termination.

- 2) Level the fireplace and fasten it to the framing using nails or screws through the nailing strips.
- 3) Assemble the flue assembly by applying Mill Pac to the 100mm inner collar of the termination and slipping the 100mm liner over it at least 35mm. Fasten with the 3 screws (drilling pilot holes will make this easier). Apply Mill Pac or high temperature silicone to the 175mm flex pipe and slip it over the 175mm outer collar of the flue terminal at least 35mm and fasten with the 3 screws.
- 4) Separate the 2 halves of the wall thimble and securely fasten the one with the tabs to the outside wall making sure that the tabs are on top and bottom. Fasten the other thimble half to the inside wall. The thimble halves slip inside each

\*If this is an outside corner, the minimum distance between the flue and the outside corner is 150mm with **AstroCap** termination cap or 300mm with alternate termination cap (556310).



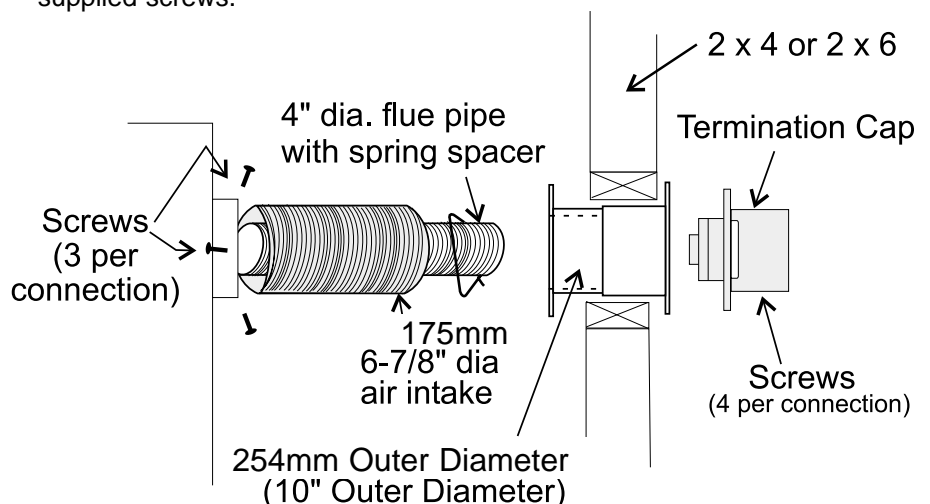
*Minimum and Maximum Flue Clearances*

other and can be adjusted for 2 x 4 or 2 x 6 walls. **The liners must slip over the collars a minimum of 35mm.**

- 5) Slip the assembled liner and termination assembly through the thimble making sure the termination cap faces up (there are markings on the cap that show which way is up). This will position the termination cap with proper down slope for draining water. Fasten the cap to the outer wall with the 4 supplied screws.
- 6) Pull the centre 100mm liner and outer 175mm liner out enough to slip over the flue collars of the fireplace.
- 7) Apply Mill Pac over the fireplace inner collar and slip the 100mm liner down over it and attach with 3 supplied screws.

- 8) Do the same with the 175mm liner.
- 9) Apply a bead of silicone between the thimble and termination and around the outer edge of the terminal at the wall in order to keep the water out.

**IMPORTANT:**  
**Do not locate Cowl where excessive wind may occur.**



## Direct Vent Off Set and Extention Kit



Geneva (Ultimate) Direct Vent



Roma (P33)



Grenada (P36)



Calais P36)



**Off Set Kit - Room/Roof  
(Zero Clearance)**

Part No: 588658



**Extension Kit - Room  
(Painted)**

Part No: 588675

**Extension Kit - Roof  
- Zero Clearance  
(Unpainted)**

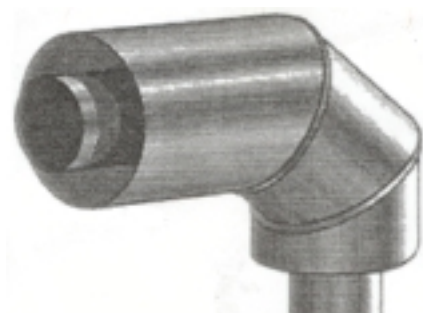
Part No: 588674

**Will fit Masport Geneva (Ultimate), Roma, Grenada & Calais Gas Fires**

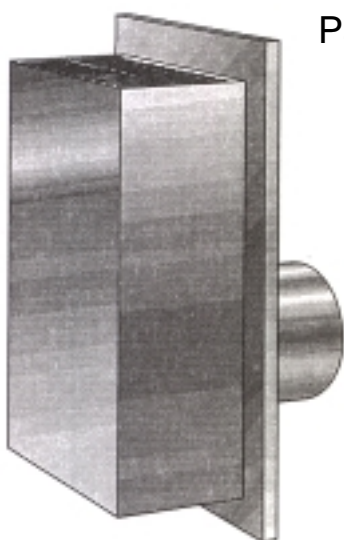
## Gas Flue Kit Accessories - D Vent



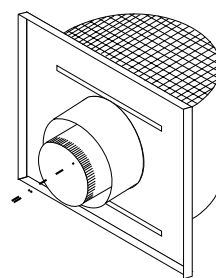
**Direct Vent Cowl  
Vertical**  
Part No: 556311



**85° Bend**  
Part No: 556313



**Direct Vent Cowl**  
Part No: 556310



**Astro Cowl**  
Part No: 946-578/P



**45° Ceiling Plate  
(Unpainted)**  
Part No: 556315



**100mm Stainless Steel  
Flue Length - 1200mm**  
Part No: 551482



**30° Ceiling Plate  
(Unpainted)**  
Part No: 556314